

Pale-headed Rosella

RH

The Pale-headed Rosella is one of our native birds which has successfully adapted to urban living as well as remaining common in its natural bush habitat. It is a medium-sized parrot recognized by its creamy head, yellow and black mantle, blue belly, tail and wings, and red vent. In some specimens, the feathers of the tail and wings have a mauve appearance. They live in pairs or gregarious noisy family groups, chasing others from their territory.

Pale-headed Rosellas nest in tree hollows or hollow stumps, but can even turn a rotting farm post into a site for a nest. In urban areas, they adapt to utilising holes giving access into building structures, and readily make use of suitable nesting boxes when provided. The female incubates the eggs, with the male assisting in feeding the young.

The diet of these birds consists mainly of seed taken from grasses, weeds (thistles, Cobbler's Pegs, and burrs), shrubs, and trees including callistemons, melaleucas, eucalypts, wattles and casuarinas, but they also eat insects and insect larvae, flowers, young tips of trees, and some fruit.

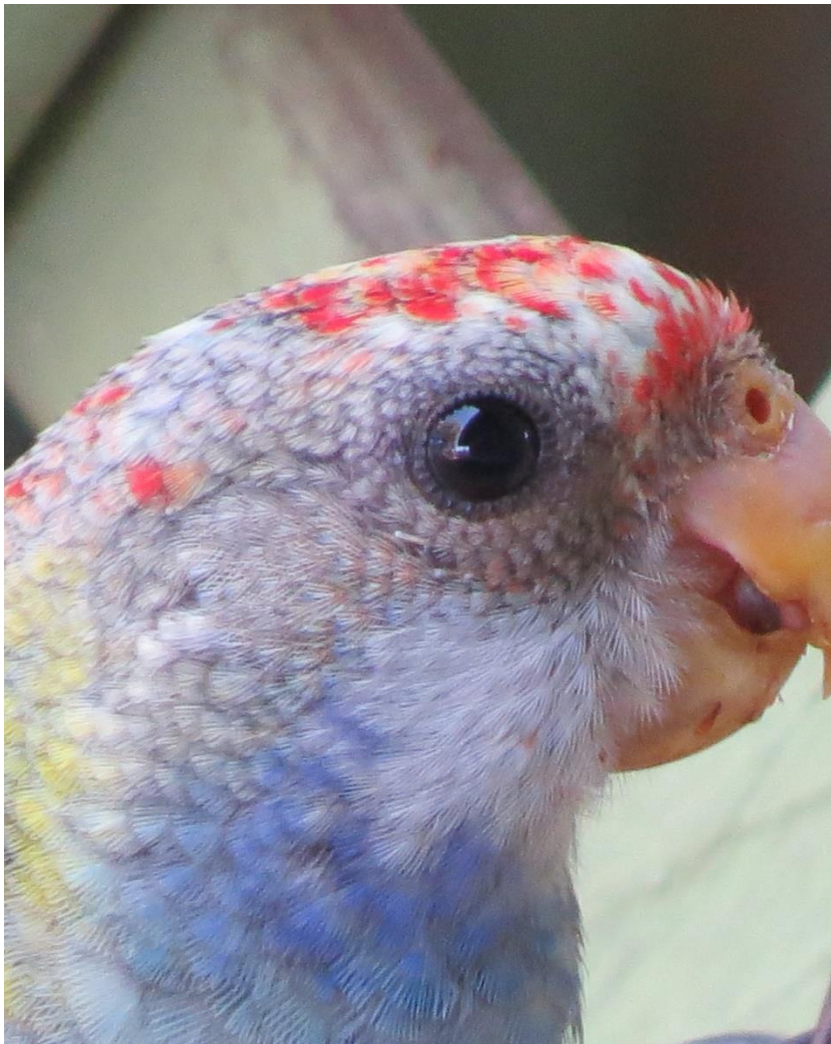
At the Maroochy Wetlands Sanctuary, watch for them in the gardens, or the verges of the rainforest, and in the melaleuca and casuarina forests.



Adult Pale-headed Rosella – back view



Adult Pale-headed Rosella in urban garden



Juvenile Pale-headed Rosella